

Rob Chesters Intelligent Healthcare Initiative



MedilinkWM
Intelligent Healthcare Initiative



Providing market expertise to medical and healthcare companies



Background

- Project established in 2004 to address the challenges posed by an older population



- Cutting edge demonstrators bring together technologies to support independent living, telecare, telemedicine, sustainable housing design and inclusive design
- Leading on the development of new technologies with the support of the Technology Strategy Board Assisted Living Innovation Platform
- Supports the High Quality Care for All agenda set out by Lord Darzi with a particular emphasis on innovation

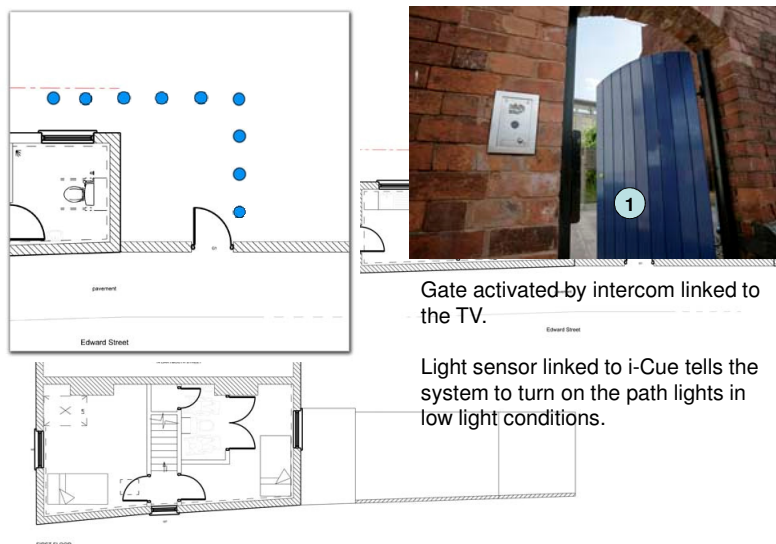
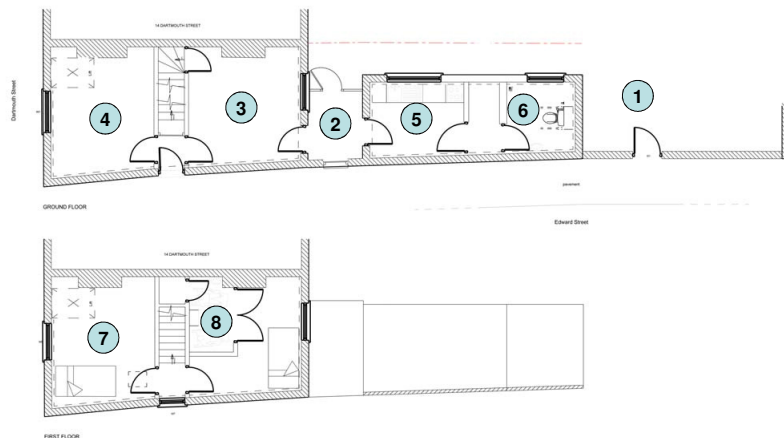
MedilinkWM
Intelligent Healthcare Initiative



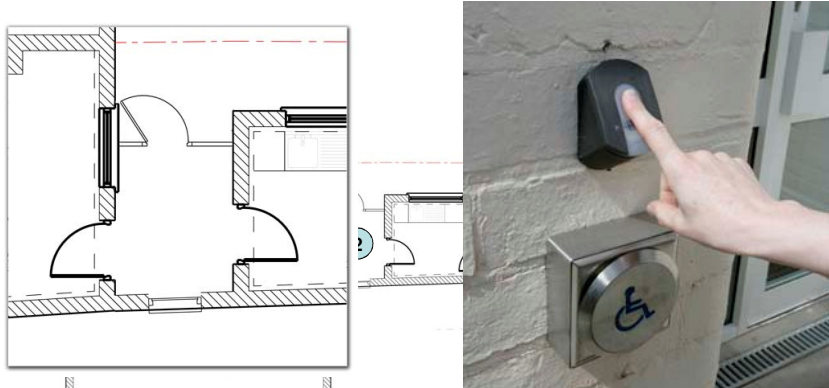
Providing market expertise to medical and healthcare companies



A walk through the *i*-House

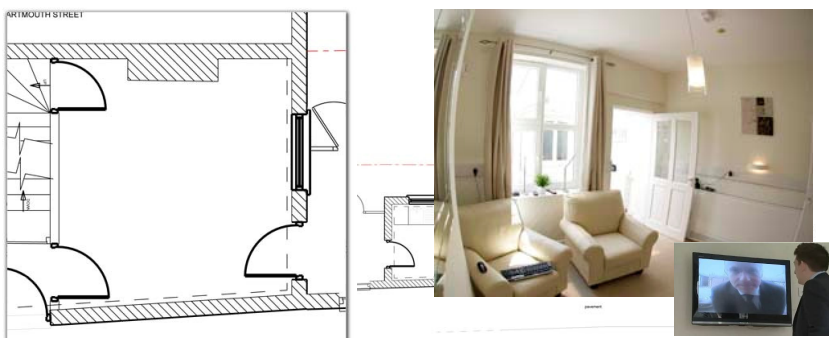


1) Gate entrance to the *i*-House



Finger print reader provides keyless entry to the house. The reader is linked to the i-Cue system which authenticates the user and activates the powered door.

2) Entrance to the *i*-House



PIR sensors in the living room provide occupancy data and control lighting.

The SMS base station can also be used to control lighting via a mobile phone, it also has a temperature sensor.

3) Living room

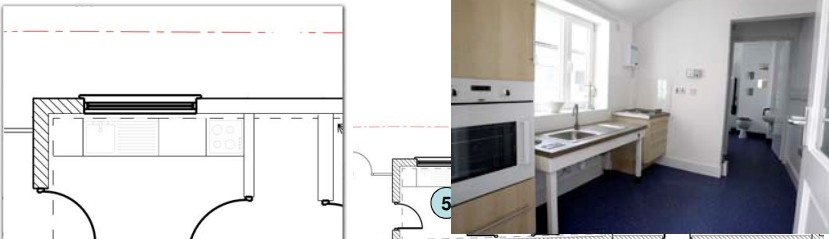


PIR sensors in the dining room activate the window blind when the room is entered.




The dining room also features 2 Telemedicine platforms featuring a range of sensors.



4) Dining room



The kitchen features touch control taps, automatic water shut off and memory prompting tablet PC.



A finger print control panel is used to log into the kitchen.



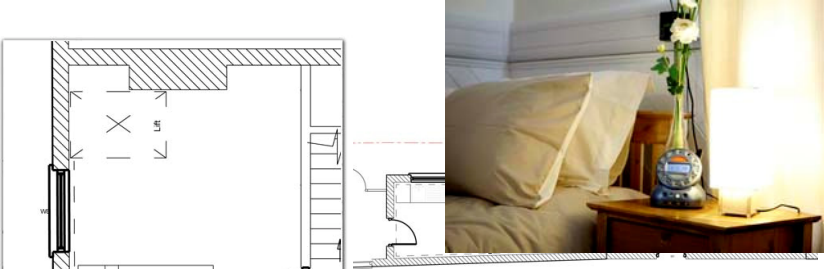
5) Kitchen



The bathroom features touch control shower and hand free sensor flush.

The i-Cue system also has a passive fall detection feature using the PIR sensor, this will be linked into the shower.

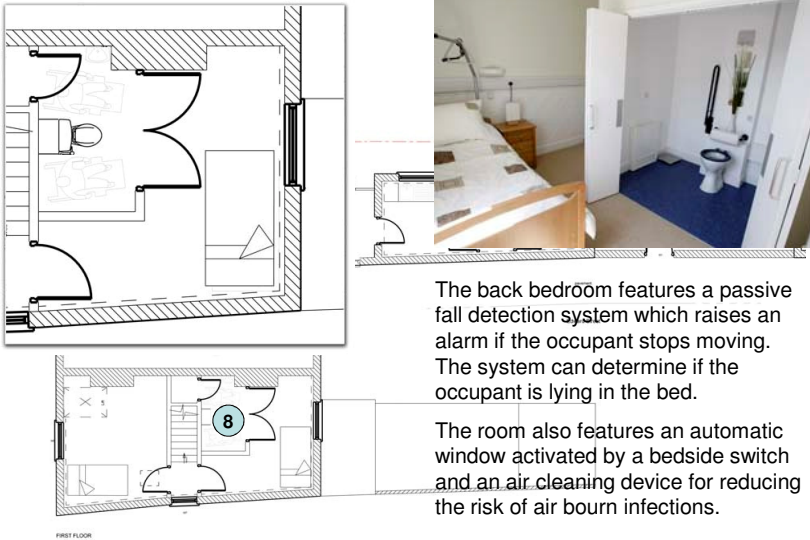
6) Bathroom



The front bedroom features a window sensor connected to the i-Cue heating controller. If the window is open i-Cue will prompt but will not turn up the heating.

Wireless controlled valves adjust the radiator temperature.

7) Front Bedroom



The back bedroom features a passive fall detection system which raises an alarm if the occupant stops moving. The system can determine if the occupant is lying in the bed.

The room also features an automatic window activated by a bedside switch and an air cleaning device for reducing the risk of air born infections.

8) Back Bedroom

Breaking new ground and outcomes

- A successful partnership project with the Industry, NHS, Social Care and Housing
- Links Industry with Users, Health and Social Care
- Demonstrates technology and increases awareness, over 800 visitors over the past 17 months (National / International)
- Has supported technology adoption
- Successfully raised the profile of AL and the West Midlands region
- Has supported new product development
- Working across (AWM, TSB, KTN)

MedilinkWM
Intelligent Healthcare Initiative



Providing market expertise to medical and healthcare companies



Moving forward

- Supporting the WM SHA Telehealth rollout program (Technology adoption / Service re-design) Telehealth Menu
- Building on the demonstrator model nationally
- Support the development of innovative re-enablement facilities
- Support knowledge transfer through the Health Tech & Medicines KTN
- Support industry to access R&D funding and market opportunities

MedilinkWM
Intelligent Healthcare Initiative



Providing market expertise to medical and healthcare companies



Thank you

<http://www.medilinkwm.co.uk/assistedliving>



MedilinkWM
Intelligent Healthcare Initiative



Providing market expertise to medical and healthcare companies

